

Class X
PHYSICS

Maximum Marks: 80

Time : 2 hrs

-
1. Answer to this Paper must be written on the paper provided separately.
 2. You will **not** be allowed to write during the first **15** minutes. This time is to be spent in reading the Question Paper.
 3. The time given at the head of this Paper is the time allowed for writing the answers.
 4. **Section I** is compulsory. Attempt **any four** questions from **Section II**.
 5. The intended marks for questions or parts of questions are given in brackets [].
-

SECTION – 1

Attempt all questions from this section

Q.1.

- (a) Which class of levers has a mechanical advantage always greater than one? What change can be brought about in this lever to increase its mechanical advantage? [2]
- (b) Two bodies, A and B of equal mass are kept at heights 20 m and 30 m respectively. Calculate the ratio of their potential energies. [2]
- (c) Give relation between joule and erg. [2]
- (d) Why are infra-red radiations preferred over ordinary visible light for taking photographs in fog? [2]
- (e) Why does machine act as i. force multiplier ii. speed multiplier. Can Machine act as force and speed multiplier simultaneously. [2]

Q.2.

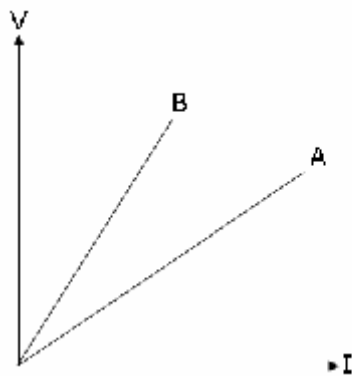
- (a) What are the three principle rays to draw the ray diagram for image formation
Construct the ray diagram to support this. [2]
- (b) State Snell's Law of Refraction of light. [2]
- (c) (i) What will be the colour of a blue flower when it is seen in magenta coloured light?

(ii) Name another secondary colour of light in which the flower will show the same colour as it shows in the magenta coloured light. [2]
- (d) A lens forms an erect magnified and virtual image of an object .
a. Name the type of lens . b. Draw a ray diagram to show the formation of image.
c. Where is object placed in relation to lens. d. Name the device which uses this principle [2]

- (e) What adjustment you need to make for stringed instrument for it to emit the note of desired frequency ? [2]

Q.3.

- (a) Define the terms:
- (i) Amplitude
 - (ii) Frequency (as applied to sound waves). [2]
- (b) An object is placed in front of a converging lens at a distance greater than twice the focal length of the lens. Draw a ray diagram to show the formation of the image. [2]
- (c) Mention one difference between reflection of light from a plane mirror and total internal reflection of light from a prism. [2]
- (d) The V-I graph for a series combination and for a parallel combination of two resistors is as shown in the figure below:



Which of the two, A or B, represents the parallel combination? Give a reason for your answer. [2]

- (e) Of the three connecting wires in a household circuit:
- (i) Which two of the three wires are at the same potential?
 - (ii) In which of the three wires should the switch be connected? [2]

Q.4.

- (a) What will an alpha particle change into when it absorbs:
- (i) One electron;
 - (ii) Two electrons? [2]
- (b) Some hot water was added to three times its mass of cold water at 10°C and the resulting temperature was found to be 20°C . What was the temperature of the hot water? [2]
- (c) Calculate the value of the resistance which must be connected to a $15\ \Omega$ resistance to provide an effective resistance of $6\ \Omega$. [2]
- (d) Why are burns caused by steam more severe than those caused by boiling water at the same temperature? [2]

- i. when current flows in wire , it creates _____.
- ii. a current carrying solenoid behaves like a _____ and when freely suspended
- (e) it rests in _____ direction [2]

SECTION – II (40 Marks)
Attempt any four questions from this section

Q.5.

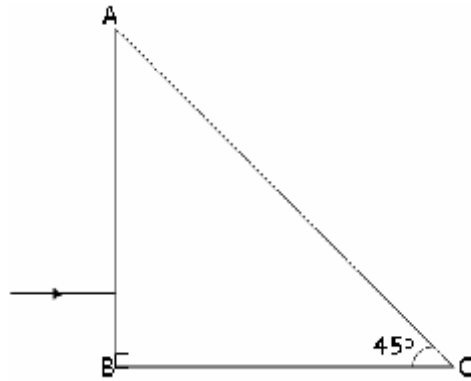
- (a) (i) Define a kilowatt hour. How is it related to the joule?
- (ii) How can the work done be measured when force is applied at an angle to the direction of displacement ? [3]
- (b) (i) What is the main energy transformation that occurs in:
- (1) During nuclear fission reaction.
- (2) Charging of a battery.
- (ii) Write an expression to show the relationship between mechanical advantage, velocity ratio and efficiency for a simple machine. [3]
- (c) A block and tackle pulley system has a velocity ratio 3.
- (i) Draw a labeled diagram of this system. In your diagram, indicated clearly the points of application and the directions of the load and effort.
- (ii) Why should the lower block of this pulley system be of negligible weight? [4]

Q.6.

- (a) Describe a method to measure the specific heat capacity of a solid , like piece of copper [3]
- (b) 200 g of hot water is at 80°C is added to 300g of cold water at 10°C . Neglecting the heat taken by container Calculate the final temperature of mixture of water. Specific heat capacity of water = 4200 J/kg/K . [3]
- (c) Draw a labelled diagram of dc motor. What energy conversion takes place during the working of dc motor. [4]

Q.7.

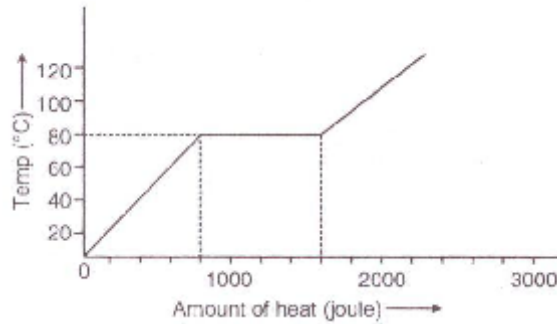
- (a) The diagram given below shows a right-angled prism with a ray of light incident on the side AB. (The critical angle for glass is 42°)



- (i) Copy the diagram and complete the path of the ray of light in and out of the glass prism.
- (ii) What is the value of the angle of deviation shown by the ray? [3]
- (b) (i) A particular type of high energy invisible electromagnetic rays help us to study the structure of crystals. Name these rays and given another important use of these rays.
- (ii) How does the speed of light in glass change on increasing the wavelength of light? [3]
- (c) (i) With the help of a well-labelled diagram show that the apparent depth of an object, such as a coin, in water is less than its real depth.
- (ii) How is the refractive index of water related to the real depth and the apparent depth of a column of water? [4]

Q.8.

- (a) A man standing in front of a vertical cliff fires a gun. He hears the echo after 3 seconds. On moving closer to the cliff by 82.5 m, he fires again. This time, he hears the echo after 2.5 seconds. Calculate:
- (i) The distance of the cliff from the initial position of the man.
- (ii) The velocity of sound. [3]
- (b) (i) What is meant by specific heat capacity of a substance?
- (ii) Why does the heat supplied to a substance during its change of state not cause any rise in its temperature? [3]
- (c) A substance is in the form of a solid at 0°C . The amount of heat added to this substance and the temperature of the substance are plotted on the following graph:

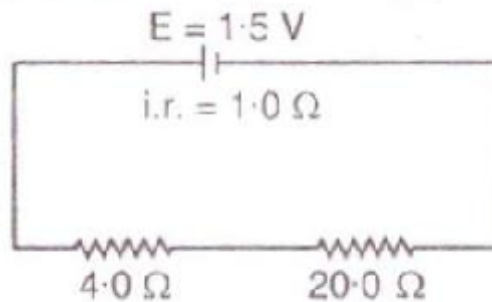


If the specific heat capacity of the solid substance is $500 \text{ J/kg } ^\circ\text{C}$, find from the graph:

- (i) The mass of the substance;
- (ii) The specific latent heat of fusion of the substance in the liquid state. [4]

Q9.

- (a)
 - (i) What is meant by earthing of an electrical appliance? Why is it essential?
 - (ii) What will be the effect on the working of an electric bell if instead of a direct current, an alternating current is used? [3]
- (b)
 - (i) State two factors on which the strength of an induced current depends.
 - (ii) When a solenoid that is carrying current is freely suspended, it comes to rest along a particular direction. Why does this happen? [3]
- (c) A cell of e.m.f. 1.5 V and internal resistance 1.0Ω is connected to two resistors of 4.0Ω and 20.0Ω in series as shown in the figure:



Calculate the :

- (i) Current in the circuit.
- (ii) Potential difference across the 4.0 ohm resistor.
- (iii) Voltage drop when the current is flowing.
- (iv) Potential difference across the cell. [4]

Q.10.

- (a) 1kg of ice is heated at constant rate and its temperature is recorded after every 30s till steam is formed at 100 C . Draw the temperature time graph to show change of phase. [3]
- (b) (i) State the principle on which the functioning of a nuclear reactor is based.
(ii) Name a material that can be used as fuel in a nuclear reactor.
(iii) How is the activity in a nuclear reactor controlled? [3]
- (c) (i) What happens to the atomic number of an element when it emits:
(1) An alpha particle; (2) A beta particle.
(ii) Explain why alpha and beta-particles are deflected in an electric or a magnetic field but gamma rays are not deflected in such a field. [4]