

**ICSE BOARD**  
**Class X**  
**PHYSICS**

**Time: 2 hrs**

**Maximum Marks: 80**

---

**General Instruction**

1. Answer to this Paper must be written on the paper provided separately.
  2. You will **not** be allowed to write during the first **15** minutes. This time is to be spent in
  3. reading the Question Paper.
  4. The time given at the head of this Paper is the time allowed for writing the answers.
  5. **Section I** is compulsory. Attempt **any four** questions from **Section II**.
  6. The intended marks for questions or parts of questions are given in brackets [ ].
- 

**Section - I**

**Question 1**

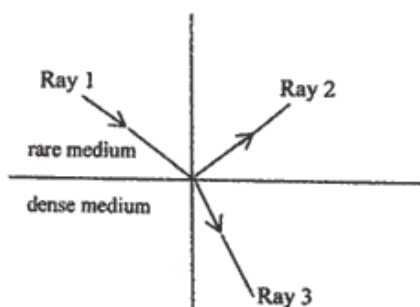
**[10]**

- (a) (i) Define 1 kgf.
- (ii) How is related to the S.I unit of force?
- (b) State whether the work is done by gravity in the following cases.
- i. A boy walks on a levelled road.
  - ii. A moon revolving round the earth.
- (c) A boy of mass 30 kg is sitting at a distance of 2 m from the middle of a seesaw. Where should a boy of mass 40 kg sit so as to balance the see-saw?
- (d) (i) What is meant by the term 'moment of force'?
- (ii) If the moment of force is assigned a negative sign then will the turning tendency of the force be clockwise or anticlockwise?
- (e) (i) A pulley system is slightly rusted. With reference to the terms MA VR and Efficiency , name and define the term that remains unaffected in the given situation.
- (ii) A man of mass 80 kg climbs 300 steps to reach a temple on hill. If the height of each step is 30 cm, then calculate the gain in his potential energy when he is at the top. [  $g = 9.8 \text{ m/s}^2$  ]

## Question 2

[10]

- (a) (i) State the energy conversion taking place in a solar cell.  
(ii) Given one disadvantage of using a solar cell.
- (b) A body of mass 0.2 kg falls from a height of 10 m to a height of 6 m above the ground. Find the loss in potential energy taking place in the body. [ $g = 10 \text{ ms}^{-2}$ ]
- (c) (i) Define the term refractive index of a medium in terms of velocity of light.  
(ii) A ray of light moves from a rare medium to a dense medium as shown in the diagram below. Write down the number of the ray which represents the partially reflected ray.

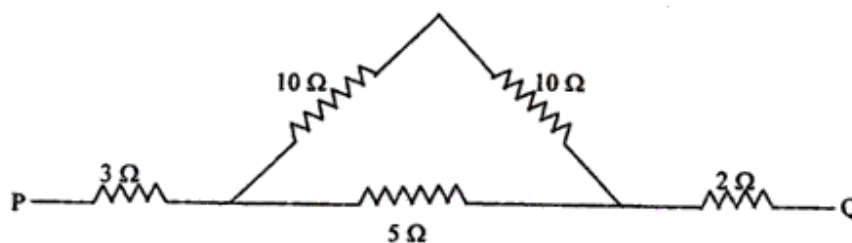


- (d) You are provided with a printed piece of paper. Using this paper how will you differentiate between a convex lens and a concave lens?
- (e) A ray of light incident at an angle of incidence 'I' passes through an equilateral glass prism such that the refracted ray inside the prism is parallel to its base and emerges from the prism at an angle of emergence 'e'.
- (i) How is the angle of emergence 'e' related to the angle of incidence 'I'?
- (ii) What can you say about the value of the angle of deviation in such a situation?

### Question 3

[10]

- (a) (i) What is meant by 'Dispersion of light'?
- (ii) In the atmosphere which colour of light gets scattered the least?
- (b) Which characteristic of sound will change if there is a change in
- (i) Its amplitude
- (ii) Its waveform.
- (c) (i) Name one factor which affects the frequency of sound emitted due to vibrations in an air column.
- (ii) Name the unit used for measuring the sound level.
- (d) An electrical appliance is rated at 1000 KVA, 220 V. If the appliance is operated for 2 hours, calculate the energy consumed by the appliance in:
- (i) kWh (ii) joule
- (e) Calculate the equivalent resistance between P and Q from the following diagram:



### Question 4

[10]

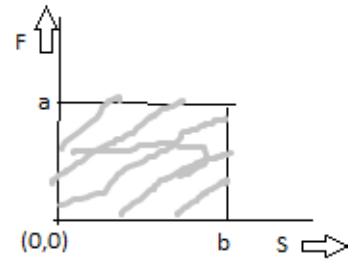
- (a) (i) What is an e.c. generator or Dynamo used for?
- (ii) Name the principle on which it works.
- (b) Differentiate between heat capacity and specific heat capacity.
- (c) A hot solid of mass 601 g at  $100\ ^\circ\text{C}$  is placed in 150 g of water at  $20\ ^\circ\text{C}$ . The final steady temperature recorded is  $25\ ^\circ\text{C}$ . Calculate the specific heat capacity of the solid. [Specific heat capacity of water =  $4200\ \text{J kg}^{-1}\ ^\circ\text{C}^{-1}$ ]
- (d) (i) What is the value of the speed of gamma radiations in air or vacuum?
- (ii) Name a material which exhibits fluorescence when cathode rays fall on it.
- (e) State two differences between a step up transformer and step down transformer.

## Section- II

### Question 5

[10]

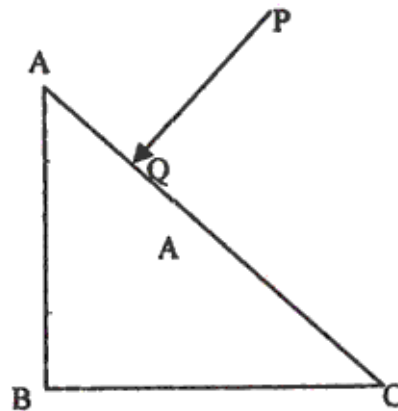
- (a) (i) Which of the following remains constant in uniform circular motion: Speed or Velocity or both?
- (ii) Name the force required for uniform circular motion. State its direction.
- (b) (i) State the class of levers and the relative positions of load (L), effort (E) and fulcrum (F) in each of the following cases.
1. A bottle opener
  2. Sugar tongs.
- (ii) Why is less effort needed to lift a load over an inclined plane as compared to lifting the load directly?
- (c) The diagram below shows a force - displacement graph for a freely falling body of mass 200 g. IF the shaded area is 40 sq unit, then answer the questions that follow. [ $g = 10 \text{ m/s}^2$ ]
- i. Calculate the value of 'a'
  - ii. What is the work done corresponding to the displacement 'b' m?
  - iii. Calculate the value of 'b'.



### Question 6

[10]

- (a) (i) What is meant by the term 'critical angle'?
- (ii) How is it related to the refractive index of the medium?
- (iii) Does the depth of a tank of water appear to change or remain the same when viewed normally from above?
- (b) A ray of light PQ is incident normally on the hypotenuse of a right angled prism ABC as shown in the diagram given below:



- (i) Copy the diagram and complete the path of the ray PQ till it emerges from the prism.
- (ii) What is the value of the angle of deviation of the ray?
- (iii) Name an instrument where this action of the prism is used.
- (c) A converging lens is used to obtain an image of an object placed in front of it. The inverted image is formed between  $F_2$  and  $2F_2$  of the lens.
- (i) Where is the object placed?
- (ii) Draw a ray diagram to illustrate the formation of the image obtained.

## Question 7

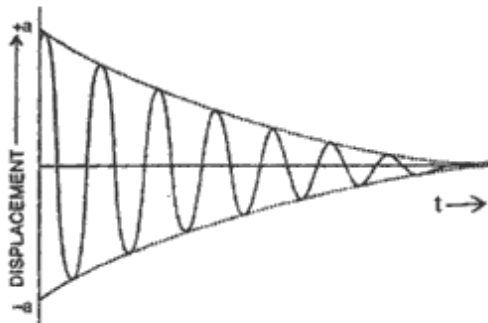
[10]

- (a) i. Why does smoke appear white?  
ii. Define the phenomenon related to this.  
iii. It is observed that water in container is boiling at  $105\text{ }^{\circ}\text{C}$ . Give two reasons to explain why its boiling at higher temperature.
- (b) (i) A man standing between two cliffs produces a sound and hears two successive echoes at intervals of 3 s and 4 s respectively. Calculate the distance between the two cliffs.

The speed of sound in the air is  $330\text{ ms}^{-1}$ .

(ii) Why will an echo not be heard when the distance between the source of sound and the reflecting surface is 10 m?

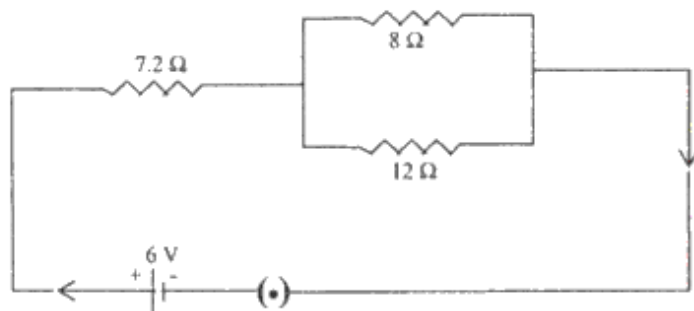
- (c) The diagram below shows the displacement-time graph for a vibrating body.
- (i) Name the type of vibrations produced by the vibrating body.
- (ii) Give one example of a body producing such vibrations.
- (iii) Why is the amplitude of the wave gradually decreasing?
- (iv) What will happen to the vibrations of the body after some time?



### Question 8

[10]

- (a) (i) A cell is sending current in an external circuit. How does the terminal voltage compare with the e.m.f of the cell?
- (ii) What is the purpose of using a fuse in an electrical circuit?
- (iii) What are the characteristic properties of fuse wire?
- (b) (i) Write an expression for the electrical energy spent in the flow of current through an electrical appliance in terms of  $I$ ,  $R$  and  $t$ .
- (ii) At what voltage is the alternating current supplied to our houses?
- (iii) How should the electric lamps in a building be connected?
- (c) Three resistors are connected to a 6 V battery as shown in the figure given below:



Calculate:

- (i) The equivalent resistance of the circuit.
- (ii) Total current in the circuit.
- (iii) Potential difference across the  $7.2 \Omega$  resistor.

### Question 9

[10]

- (a) i. What is the principle of method of mixtures?  
ii. What is the other name given to it?  
iii. Name the law on which this principle is based.  
iv. Some amount of bees wax having melting point  $62^\circ\text{C}$  is heated from room temperature  $35^\circ\text{C}$  till it melts completely. Draw its heating curve corresponding to the information given above.
- (b) A piece of ice at  $0^\circ\text{C}$  is heated at a constant rate and its temperature recorded at regular intervals till steam is formed at  $100^\circ\text{C}$ . Draw a temperature – time graph to represent the change in phase. Label the different parts of your graph.
- (c) 40 g of ice at  $0^\circ\text{C}$  is used to bring down the temperature of a certain mass of water at  $60^\circ\text{C}$  to  $10^\circ\text{C}$ . Find the mass of water used.

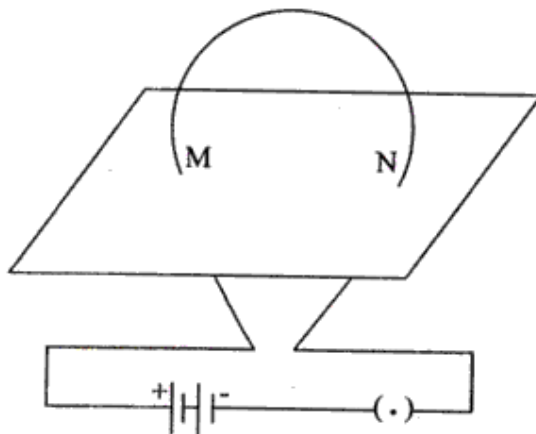
[Specific heat capacity of water =  $4200 \text{ J kg}^{-1} \text{ }^\circ\text{C}^{-1}$ ]

[Specific latent heat of fusion of ice =  $336 \times 10^3 \text{ J kg}^{-1}$ ]

### Question 10

[10]

- (a) The diagram below shows a current carrying loop or a circular coil passing through a sheet of cardboard at the points M and N. The sheet of cardboard is sprinkled with iron filings.



- (i) Copy the diagram and draw an arrow on the circular coil to show the direction of current flowing through it.
- (ii) Draw the pattern of arrangement of the iron filings when current is passed through the loop.
- (b) During the rotation of an armature coil in a D.C motor
- State for which position of coil when couple is maximum and minimum.
  - Is the magnitude of force constant when the split rings are in contact with brushes.
- (c) (i) A certain nucleus X has mass number 14 and atomic number 6. The nucleus X changes to  ${}^7_6\text{Y}^{14}$  after the loss of a particle.
- Name the particle emitted.
  - Represent this change in the form of an equation.
  - A radioactive substance is oxidized. What change would you expect to take place in the nature of its radioactivity? Give a reason for your answer.